

# MANDALAY PROGRESS ASSOCIATION

## Newsletter

### MESSAGE FROM THE PRESIDENT

I have pleasure in presenting you the Winter Newsletter which outlines the advocacy made and events held over the last six months. After the February flood and as soon as the COVID restrictions relaxed, we held our inaugural Easter Event with the exciting egg throwing competition, the popular Easter bunny (Sally Daley) and the desperate egg hunting. Thanks to Matt Slingsby for the initiative and organisation of the event.

As for the committee, Sally Daley unfortunately had to leave the committee due to her work and family commitments. Also, Henry Laursen is planning to move out of Fig Tree Pocket and hence stepped down from the Secretary role. Fortunately, Steve Jones took up the challenge and he is now our new Secretary. I wish to take this opportunity to thank Sally and Henry for their great contributions to MPA and the community. They will be missed by us.

As we approach the end of the year, we will be busy organising the Jacaranda Festival, Annual General Meeting, Seniors and Christmas Celebrations. We are in need of some extra help in organising these, so please drop an email to the Secretary if you can offer some help. Also, we are desperately looking for new members to join the committee, so please contact me via [mandalaypresident@gmail.com](mailto:mandalaypresident@gmail.com) if are interested or wish to enquire more about it.

Best Regards, Joseph Tam



# EASTER EVENT



The inaugural Easter Event was phenomenal. The bunny (Sally Daley) was the highlight and the kids were desperately hunting for the Easter eggs. We also discovered some local talents in the egg throwing competition. Thanks to Henry, Damien and Matt for the yummy BBQ.



# MOVIE EVENT

The movie night at the Brisbane Montessori School was a huge success with some 90 people attending and enjoying the informal atmosphere at the event.

Children enjoyed the Encanto movie, some dancing, and singing along with the movie. Popcorn, lollies, and popper drinks were enjoyed by all.

A number of parents asked that the MPA schedules additional movie nights throughout the year and the MPA will work towards providing this opportunity.

Thanks to Zoe and Zara for the suggestion of the movie. We all enjoyed it!



# SENIOR'S OUTING

*Article written by Alan Inglis*

In May, Max Beckett, with support from the MPA, organised a group of seniors to visit the very interesting Beenleigh Historical Village.

The church, built in 1876, still retains the original church bell and of course Steve Norris couldn't be restrained from ringing it. Creaky knees were forgotten as the seniors in their 70s and 80s bent down to sit at the old wooden desks with the ink well holders in the school built in 1873. At the old lock-up they finally found the tools to restrain Robin Richards.

Not all of the old buildings were simply static displays. The museum includes a fully functioning printing facility with equipment ranging from the earliest of printing history right up to the period immediately prior to the introduction of computer printing. Volunteer retired compositors and printers demonstrated how each machine works as they ran the presses.

After viewing an array of other old buildings in the village the seniors were treated to tea, coffee, and scones with jam & cream served by more volunteers before the happy travellers headed back to FTP. Our thanks to the Brisbane City Council for a grant to cover the costs.



# POLICE AND MUSIC EVENT



Thanks to the Queensland Police Service for the security update and tips for protecting our properties. Also, thanks to our local musicians and Brisbane Montessori School's band for their great performances.



# FEBRUARY FLOOD

Our community spirit is phenomenal and once again this was demonstrated during the recent flood event in February.

Our member Ben Croft initiated the formation of a group of volunteers from 27 February to help others in the flood preparation and recovery. Some 120 people joined the group to offer help and exchange useful information about the flood. This was a significant achievement as we all helped one another to reduce the impact of the flood and to make a speedy recovery afterwards.

Thanks to everyone for their effort and the great love and care for the community.

In response to the 2022 Flood Review, the MPA made a submission to the Inspector-General Emergency Management (IGEM) in April 2022.

We followed up our submission with the IGEM and subsequently the Queensland Reconstruction Authority and the Council. A meeting is now scheduled with the Council for the end August 2022 to discuss the issues raised and to identify the relevant parties for actions.

Recently, we have also met with a few residents who have expressed concerns with the levee proposal made by a couple of local residents to the previous 2011 Flood Review. We clarified with these residents that MPA has not formed its position on the proposal. Instead, we have requested the Council via our submission that

an updated land survey be conducted and any flood mitigation proposal should have full consultation with the community.

In our latest communication with the Council, we reiterated our request for Council to attend to the more urgent issues including the landslides, bank erosion, and fallen trees in the river as a priority.

No doubt the backflow prevention valve did protect many homes in Mandalay from the recent flood. We are most grateful to the effort by the previous committee members including Max Beckett who helped to convince Council to have this valve installed.

The 'rain bomb' in February 2022 was believed to be a rare event but it caused local flooding of a number of streets and houses. We have pointed out this new scenario of flooding for the Council's attention and mitigation measures.



## 430 BUS ROUTE CHANGES IN EFFECT

**In response to a members' request, we have made an inquiry to the recent change to bus route 430. We noted that the service now travels via Roma Street busway to the Queen Street stop and does not stop at the Cultural Centre anymore. Translink explained this change was to make it easier for passengers to access transfers, and the train station. Also, the roadworks near the Cultural Centre are making it difficult for buses to make the required right hand turn on the outward-bound journey. The link below provides additional detail.**

[www.translink.com.au/updates/114611](http://www.translink.com.au/updates/114611)

**We have expressed our concern with Translink about the lack of community consultation prior to the change.**

## NEW INITIATIVES

There was some recent NBN's cabling works on Fig Tree Pocket Road which brought the fibre cable up to Lone Pine but not to Mandalay. Due to more working and studying from home, we believe the community would welcome the request to bring the fibre to our homes. Should you have no objection, we will make a request to NBN. However, if you do have any concern, please email the Secretary [mandalaysecretary@gmail.com](mailto:mandalaysecretary@gmail.com).

"Go Slow for Sam" - We have initiated the proposal of requesting the Council to install these signs on Fig Tree Pocket Road within the school zone area for Brisbane Montessori School and Gan Gani Community Kindergarten. We noticed these signs are effective in reducing driving speeds in school zones. Both organisations are supportive and we will issue a joint letter to Cr James Mackay soon.

# SECURITY

In response to ongoing concerns and in particular the spate of attempted break-ins or stolen cars, etc., over the last few months, the Committee has actioned the following:

- Raised the matter with Michael Berkman MP and Cr James Mackay, and met with Inspector Corey Allen APM, Sergeant Jose Sarmiento and Officer-in-charge (OIC) of the Indooroopilly Police Station. As a result, more patrols in our area have happened. With the use of POLAIR, suspected vehicles were successfully caught.
- A Police Talk was held in April 2022 raising the awareness of the community to be vigilant.
- Communicated with the residents through the social media tips to protect their properties and the contacts for reporting crimes.
- Inspector Corey Allen has been updating us in real time about crimes in the area and he noted that our area seemed to have been targeted over the last few months. Corey reminded us to be alert and asked us to help them by keeping an eye on suspected vehicles they are chasing. This relationship we built with the Police has worked really well in preventing and fighting crimes.
- A banner was erected next to the MPA noticeboard to help build a sense of a strong community. Thanks to Cr James Mackay and Philippa Cook for this.
- Reinvigoration of the Neighbourhood Watch Group is underway. Thanks to Jose and our Secretary Steve Jones.

The CCTV proposal was mentioned at the AGM 2021 and communicated via our February Newsletter. We have also conducted a survey on Security and have received up to now 18 responses. Out of those 15 voted 'Yes' to CCTV. If you haven't provided your feedback, we encourage you to fill out the survey.



Jon Grainger has sought support from the OIC and obtained legal advice on the proposal. Cr James Mackay is also supportive and has in fact offered to contribute some funding toward the purchase of the cameras.

With the help Jon Grainger, Robert Ferguson and Jacki Gauntlett, we have done our research for suitable cameras and conducted trials. As mentioned in our survey, it is important to note the camera will be pointing onto a public road and will be registered with the Police. No one in the MPA will access the footage except to ensure the camera is working. Should a crime be suspected or committed, the Police can access the footage if needed. Once we have all the details, we plan to present the proposal for voting at the Annual General Meeting to be held in November 2022.



# 2022 EVENTS

DATE	ACTIVITY
October	Jacaranda Festival
November	Annual General Meeting
December	Christmas and seniors celebrations

# SURVEYS

The MPA committee encourages our community to air their views. Please think of completing these surveys so we hear your feedback, and act on it. However, we note the response rate is rather low as indicated by the figures in brackets. Please take a moment to fill out the surveys. Should you require hard copies of the forms, they are available at the MPA box attached to the noticeboard. In case the forms run out, please let the Secretary know.

## FEEDBACK SURVEY

**(7) + (14 rec'd at the AGM 2021)**

Please feel this out to reflect on the work we did for 2021 and to express your view if the MPA's catchment should be extended or not?



## SECURITY

**(18)**

Do you want CCTV to help deter crime and increase the chance of catching suspects?



## COMMUNITY GARDEN

**(16)**

Have your say whether you wish to have a community garden in the park or not? If yes, what's your preferred location?



## MEMBERSHIP

**(7)**

We are unable to send emails to some of you probably due to superseded or wrong email address. We encourage you to update your contacts details so that we stay in touch.



## NEW SUGGESTION BOX

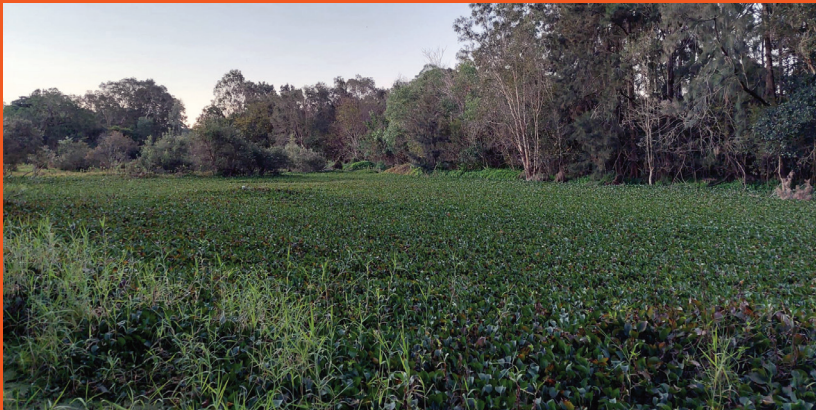
**(new)**

We have created this box to collect your suggestions and feedback on any new and existing matters.



# ENVIRONMENTAL MATTERS

Did you know that Cubberla Creek flows from Chapel Hill and enters the Brisbane River near the Fig Tree Pocket State School and provides an important environment for wildlife? We met with the representatives from the Cubberla-Witton Catchment Network (CWCN) to learn about their activities in FTP and to discuss approaches towards improving the health conditions of the lagoon in the park. We will meet again with CWCN with a view to develop a plan for consideration. During the September school holidays, the CWCN will run some educational program which will be advertised on their web site [www.cwcn.org.au](http://www.cwcn.org.au). We will help to promote these on social media too.



## MAINTENANCE ISSUES

The MPA has lodged complaints with the Council on these matters which are causing great safety and environmental concerns. Email the Secretary for more information.

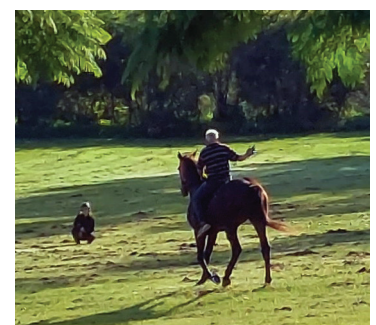
[mandalaysecretary@gmail.com](mailto:mandalaysecretary@gmail.com).

## SMALL LOT SUBDIVISIONS

Over the last decade or so, we have noticed a lot of subdivisions and developments happening in Fig Tree Pocket and we are really concerned that our lifestyle and the special character of FTP has been eroded. Increased traffic, increased stresses put on services and amenities have also been experienced. The MPA wrote a letter to the Lord Mayor in July 2022 reiterating our request for a workshop/meeting to discuss the broader impact due to the many subdivisions and developments happening in FTP. We will provide an update as soon as we hear back from the Lord Mayor.

## HORSE RIDING IN THE PARK

You might have noticed that we have a frequent visitor who brought his horse to the park and he galloped up and down the park. Whilst it appeared not a big issue to some people, a closer look revealed that this activity is in fact not allowed in the park and the galloping also imposed safety hazards to kids and people with pets. Damages were also noted already in the park resulting in some safety and environmental concerns. We have reported many times to the Council about it and the Rapid Response Team gave the horse rider verbal warning on two occasions. Unfortunately, the horse rider seemed to ignore these warnings and kept coming back to the park. If you see this horse rider again, we urge you to report to the Council by calling 3403 8888.



# ANNUAL SUBSCRIPTION

Please be reminded your membership for 2022-2023 is due for renewal. Thanks to those who have already done it.

Please excuse us in reiterating the importance of getting more residents to join the MPA to make us more representative and have a bigger voice. Your annual subscription also helps the committee to stage community events, so without your support these events may become a thing of the past. As a member, you enjoy events for free and are entitled to a free copy of the book 'The Roads to Mandalay' valued at \$20 a copy. So please help us help you.

## Member subscription details:

**Annual subscription (1 July to 30 June): Member \$20,  
Associate Member \$10 (for those living outside Mandalay)**

**Please make payment to:**

**Bank of Queensland - Mandalay Progress Association Inc**

**BSB: 124 001 Account: 1001 9083**

Should you have any queries about membership or subscription, please don't hesitate to contact Lijane, our Treasurer via [mandalaymembership@gmail.com](mailto:mandalaymembership@gmail.com) or 0426 996 814.

## GET INVOLVED

The committee is running very lean at the moment and we are down to seven and shortly to six, so please consider joining the committee to keep us going. As for time commitment, we meet for 1.5 hour every six weeks and we are flexible with how much time you can offer. So why not give it a go to help out and do something for your community, and for yourself.

## Thanks TO OUR SPONSORS AND SUPPORTERS

Brisbane City Council

Brisbane Montessori School

Fig Tree Pocket State School

Gan Gani Community Kindergarten

Lone Pine Koala Sanctuary

Cathy Lammie Property

Croftski Circus

Damien Lacey Plumbing Maintenance

OnTime Electrical & Air

TTR Printing Management

Tierney & Co. Solicitors

Other sponsors who chose to remain anonymous

Julian Simmonds ex-MP for Ryan

Michael Berkman MP for Maiwar

Cr James Mackay

### Musicians:

Alistair Sutton

Malia Albert

BMS Band & Choir

**Michael Berkman** Printed by Michael Berkman  
MP for Maiwar  
*MP for Maiwar*



MPA